

WOVEN STAINLESS STEEL GRILL



IMPORTANT

TYPE
PRODUCTS
www.type-f.co.uk

Study the instructions below carefully before fitting this to your car. If you do not understand any part of the instructions or do not feel confident about fitting this product please consult a qualified mechanic or engineer.

Removing the Front Bumper

Open the bonnet and using a 10mm socket / spanner remove the 2 off bolts shown in figure 1.

Then with the wheels removed (or on a full lock, right then left) using a phillips screwdriver remove the plastic screw / clips shown in figures 2-6. Some fixings behind the plastic liner in figure 3 will need a 10mm socket.

Under the front of the car the bumper is bolted into the chassis with 4 off bolts (figure 7) which require a socket. Remove these as well.

Now pull the bumper slightly towards you, Now you should now be able to reach the wiring for the indicators/fog lamps, unplug these and fully remove the bumper. Remove the screws and clips that hold the standard grill in place, and place with the new Stainless Steel Woven Grill. Replace all screws and clips.

While you have the bumper off, it is a good time to replace the horn if desired, and clean/check everything is rust free and OK.

Replace the bumper in the reverse sequence making sure to line up the threaded bolts on the corners into the yellow plastic cups as shown in figure 8 - 9.

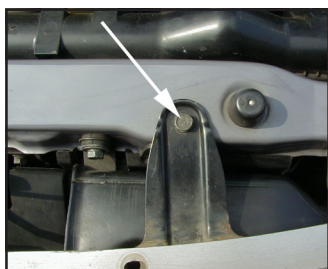
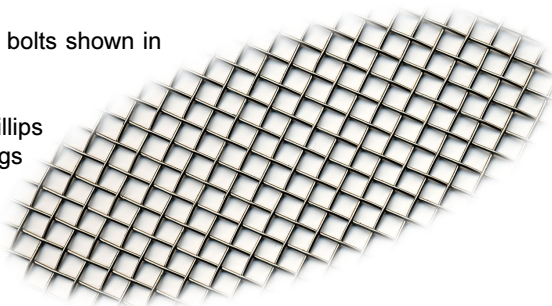


Figure 1

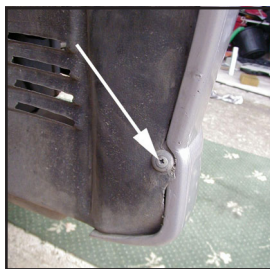


Figure 2

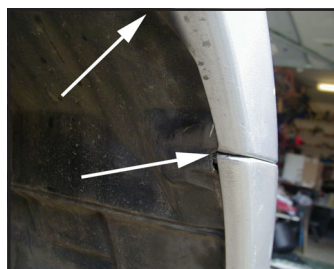


Figure 3

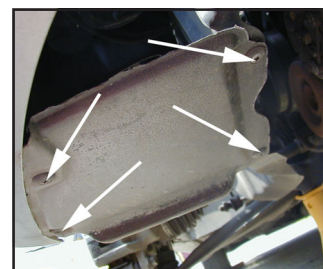


Figure 4



Figure 5

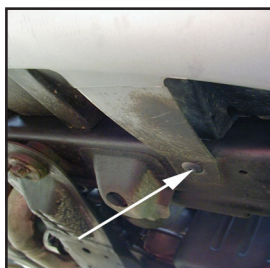


Figure 6

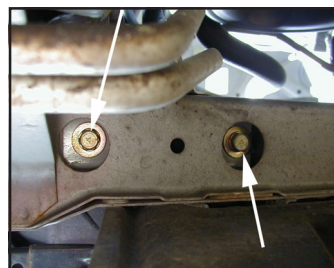


Figure 7

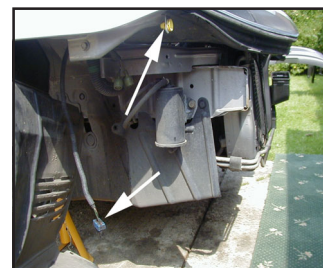
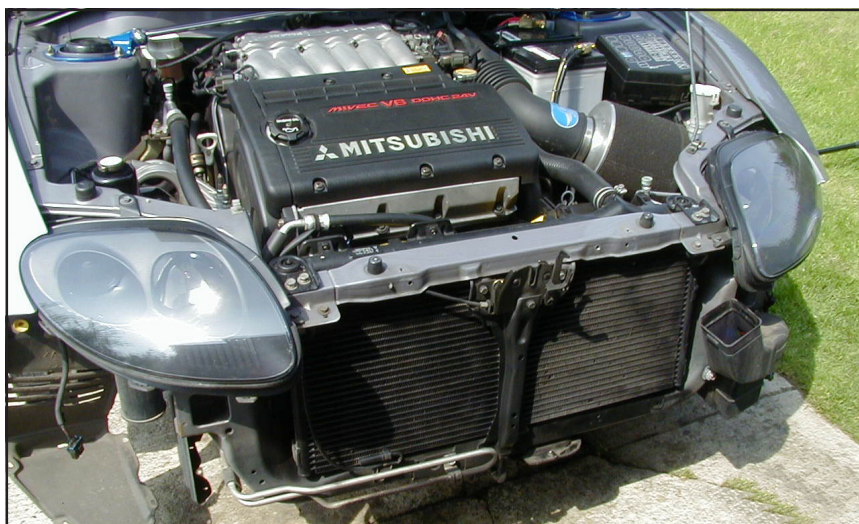


Figure 8



Figure 9



Disclaimer

We have taken great pride in the accuracy of the information given above, but vehicle manufacturers make alterations and design changes during the production run of a particular vehicle of which we can not know of. No liability can be accepted by the manufacturer or distributors for loss, damage or injury caused by any errors in, or omissions from, the information given above.